

# SERRA MESA OBSERVER

PUBLISHED BY THE SERRA MESA COMMUNITY COUNCIL

VOLUME 38, ISSUE 5 SEPTEMBER / OCTOBER 2024

**Serra Mesa Block Party**  
Photos by "by Scott Norland  
Photography" and Judy Mitchell



[www.serramesa.org](http://www.serramesa.org)

You are invited to participate in the  
Next:

**Serra Mesa Community Council  
General Meeting**

*Tuesday, September 24 at 6:30 p.m.  
Serra Mesa - Kearny Mesa Library  
Community Room, 9005 Aero Drive*

**Serra Mesa Community Council  
General Meeting**

*Tuesday, January 28, 2025 at 6:30 p.m.  
Serra Mesa - Kearny Mesa Library  
Community Room, 9005 Aero Drive*



Neighborhood People  
and Friendly Businesses  
Living and Working Together

More Photos <https://www.scottnorlandphotography.com/event/community/serra-mesa-block-party-2024/>

**ELECTED OFFICIALS**

Board of Education Shana Hazan	(619) 725-8000	State Senator Toni G. Atkins	(619) 645-3133
City Councilmember Raul Campillo	(619) 236-6677	Governor Gavin Newsom	(619) 525-4641
Mayor Todd Gloria	(619) 236-6330	U.S. Representative Sara Jacobs	(619) 280-5353
County Supervisor Joel Anderson	(619) 531-5544	U.S. Senator Laphonza Butler	(202) 224-3841
State Assembly Member Chris Ward	(619) 239-7801	U.S. Senator Alex Padilla	(619) 239-3884

**Serra Mesa Community Council Board - Officers**

Joseph Konieczka.....	(858) 565-2473*
<i>President</i>	
Jon Cima.....	(858) 565-2473*
<i>Vice President</i>	
Andrea Eaton.....	(858) 565-2473*
<i>Treasurer/Community Events</i>	
Cindy McIntyre.....	(858) 565-2473*
<i>Secretary</i>	

**Board Members**

Carl Demas.....	(858)565-2473*
<i>Advisor</i>	
Alexia Longley.....	(858)565-2473*
<i>Audio-Visual</i>	
Carmen Ojeda.....	(858)565-2473*
<i>Community Involvement</i>	
Judi Mitchell.....	(858)565-2473*
<i>SDSU Mission Valley</i>	
Tom Leech.....	(858)565-2473*
<i>Current Issues</i>	
Sandra Stahl.....	(858)565-2473*
<i>Chief Environmental Officer</i>	
Sam Yo euth.....	(858) 565-2473*
<i>Friends of the Library</i>	
Jon Cima.....	(858)565-2473*
<i>SMRC/SMPPAG</i>	
Cindy Moore.....	(858)565-2473*
<i>Special Projects/SMPG</i>	

**Appointed Positions**

Ronda Adams.....	(858)565-2473*
<i>Observer Editor</i>	
Geralyn White.....	(858)565-2473*
<i>Neighborhood Awareness</i>	
Colin Dowling.....	(858)565-2473*
<i>Webmaster</i>	

**Key Serra Mesa Volunteers**

Catherine Stempel.....	(858)565-2473*
<i>SMPG President</i>	
Monica Fuentes.....	(858)565-2473*
<i>Friends of Ruffin Canyon</i>	
Kristine Webb.....	(858)565-2473*
<i>Serra Mesa Food Pantry</i>	
Karl Doering.....	(858)565-2473*
<i>SM Community Garden &amp; Orchard</i>	

**Serra Mesa Community Groups**

Serra Mesa Community Council	(858) 565-2473
e-mail: <a href="mailto:communitycouncil@serramesa.org">communitycouncil@serramesa.org</a>	
Serra Mesa Planning Group	(858) 565-2473
e-mail: <a href="mailto:smpg@serramesa.org">smpg@serramesa.org</a>	

**CALENDAR OF COMING EVENTS**

Sept 4	Friends of Serra Mesa-Kearny Mesa Library 5:00 p.m. Serra Mesa-Kearny Mesa Library, Sudberry Room
Sept 14	Coffee with Campillo, 9:00:30-11 am, Serra Mesa-Kearny Mesa Library, Community Room
Sept 19	Serra Mesa Village Connection 3:30 p.m. Serra Mesa-Kearny Mesa Library, Community Rm
Sept 19	Serra Mesa Planning Group 7 p.m. Serra Mesa-Kearny Mesa Library, Community Room
Sept 21	Friends of Ruffin Canyon Clean-up at Shawn Avenue, 9 am-Noon
Sept 24	Serra Mesa Community Council General Meeting 6:30 p.m. Serra Mesa-Kearny Mesa Library, Community Rm
Oct 17	Serra Mesa Village Connection 3:30 p.m. Serra Mesa-Kearny Mesa Library, Community Rm
Oct 17	Serra Mesa Planning Group 7 p.m. Serra Mesa-Kearny Mesa Library, Community Room

**In This Issue...**

SMCC Community Forums	1
Community Phone Numbers, Calendar	2
President's Message	3
Aztecs Rock Hunger SDSU	4
The Impact of Volunteerism..., Coffee with Campillo	5
Important Phone Numbers, Business Cards	6
John Marsh Spotlight	7
Serra Mesa Infrastructure Projects Survey Results	8
Ads for Gem Diego Show, David Hussain	10
Projects & Other Information as of August 2024	11
Aztecs Rock Hunger	13
Snapdragon, Bike Lane Clean-up, Serra Mesa Block Party	14
Name These Serra Mesa Buildings	16
Serra Mesa Recreation Center, Business Cards	19
Serra Mesa Planning Group News	20
Serra Mesa—Kearny Mesa Branch Library	23
Serra Mesa Food Pantry	Back Page

*Serra Mesa Observer* is published bimonthly by the Serra Community Council

Annual fees: Household...\$15 Sponsor...\$25 Benefactor...\$50  
For subscriptions and ads, call (858) 565-2473 Council doesn't endorse ads.

**Articles, Ideas, & Upcoming Events for the Observer** are welcome. Editor reserves right to edit articles.

For articles, e-mail Ronda Adams - [communitycouncil@serramesa.org](mailto:communitycouncil@serramesa.org)

**Deadline:** November / December 2024 Edition...October 25<sup>th</sup>  
P.O. Box 23315, San Diego, CA, 92193

<http://www.serramesa.org> [communitycouncil@serramesa.org](mailto:communitycouncil@serramesa.org)

"photo by Scott Norland Photography"  
<https://www.scottnorlandphotography.com/>  
<https://www.instagram.com/scottnorlandphotography/>



I hope everyone is enjoying their summer and is prepared for the new school season ahead.

As the hot summer days dwindle, the air begins to crisp, signaling the end of summer and it's back to school for many. The excitement and nervousness of a new academic year await, as classmates reunite, and teachers welcome fresh faces. It also means the start of the new season for the Aztecs at Snapdragon Stadium. We are fortunate to have a great stadium in our community!

I had a chance to check out the block party back in July. Local resident, John Marsh, did a great job organizing the 4<sup>th</sup> annual Serra Mesa block party. It took a lot of effort and hats off to him and the sponsors for making that happen. It was an excellent community event, and I know many folks are hoping it comes back next year. It gave me an opportunity to talk with a ton of folks from the Serra Mesa community and listen to their suggestions, feedback and encouragement. Hoping to see you folks at our next public meeting on September 24<sup>th</sup> at the Serra Mesa\Kearny Mesa library. It's shaping up to be a good one and we'll have more information in the near future.

We hope that everyone participated in the survey that was sent out in August. We received a ton of great feedback that I believe is going to help the Serra Mesa Community Council and Planning Group move forward with issues folks may have in our community. It was very insightful so look for more surveys in the future. There is a ton going on in the community so let's remain informed and active!

See you in September (24<sup>th</sup>) at the next General meeting!

Joe

**President**

**Serra Mesa Community Council**

**[Website](#) | [Observer Newsletter](#) | [Serra Mesa on X](#) | [Serra Mesa on Youtube](#)**



**What is Aztecs Rock Hunger?**

Aztecs Rock Hunger (ARH) is an SDSU initiative led by Associated Students to collect monetary donations for those facing food and nutrition insecurity in San Diego. To date, SDSU has raised over \$920,000. This year, help us hit \$1,000,000 in total donations!

**What is Food Insecurity?**

Lack of consistent access to sufficient food for an active, healthy life often stemming from a lack of financial resources at the household level

**What is Nutrition Insecurity?**

Lack of physical or economic access to sufficient, safe, nutritious and culturally acceptable food

**Where Do Donations Go?**



SDSU Economic Crisis and Response Team (ECRT): **20% of monetary donations support ECRT**, aiding SDSU students facing food, housing or other immediate financial crises.



A.S. Food Pantry: In its 9th year, the A.S. Food Pantry distributes over **100,000 lbs. of food**, including eggs and fresh produce, annually to SDSU students.



The Jacobs & Cushman San Diego Food Bank: The Food Bank **feeds 400,000 people monthly** in San Diego County.

**CAMPAIGN INFORMATION**

**October 4 - 27**

**Ways to Donate:**

1. Venmo @aztecsrock and CashApp \$aztecsrock
2. Online at [sdsu.edu/aztecsrockhunger](https://sdsu.edu/aztecsrockhunger)
3. At SDSU campus Starbucks, eateries and markets

**Impact**

**In the 2023-24 fiscal year:**



ECRT served almost 1,600 individual students.



The A.S. Food Pantry distributed over 114,000 pounds of food.



The San Diego Food Bank distributed 44 million pounds of food.

**Questions?**

- [associatedstudents@sdsu.edu](mailto:associatedstudents@sdsu.edu)
- @aztecsrockhunger
- [sdsu.edu/aztecsrockhunger](https://sdsu.edu/aztecsrockhunger)

**Thank you for your continued support and dedication to Aztecs Rock Hunger!**



## The Impact of Volunteerism on the Alzheimer's

Volunteering is one of the most noble things one can do, and volunteers are the heart of their communities. Their work has meaningful impacts, and the volunteer efforts in San Diego County are no exception. Among these dedicated individuals are the Alzheimer's Association (Association) volunteers, based in the Serra Mesa neighborhood of San Diego. Working alongside staff members, these integral contributors focus primarily on education, awareness, and community engagement while promoting the organization's mission.

Rebecca Turman, Program & Education Specialist at the Alzheimer's Association, explains that the organization's mission is to lead global research, drive risk reduction, and maximize quality care to achieve a world without Alzheimer's disease and other related dementias. As the leading voluntary health organization in Alzheimer's care and research, the Alzheimer's Association relies heavily on volunteers, whom Turman calls the "backbone" of the organization.

Notably, Turman herself began as a volunteer in July 2016 before becoming a staff member in 2017, where she played a crucial role in advocacy and education efforts. She highlighted the vital role volunteers have played since the Alzheimer's Association's founding in 1980. Their volunteers often spearhead community outreach, leading caregiver support groups, attending resource fairs, and supporting the organization in any way they can. Additionally, the volunteers frequently work with the Association's public policy department to secure funding and training essential to the Association's mission.


Volunteers are the face of the Alzheimer's Association in our communities, driving awareness and support. They come from all walks of life, united by a desire to help and the well-being of others. Turman emphasizes that the Alzheimer's Association "stands on volunteers' shoulders" and that they are "the core of what we do."

Having worked with the Association frequently since taking office, San Diego County Supervisor Joel Anderson recognizes the impact of the volunteers' contributions: "I commend the Alzheimer's Association volunteers for their incredible work providing resources and important information to families in our community. Their selfless service makes a difference every day."

Remember, volunteering substantially impacts your community in a positive way. Your time and skills will make a difference. A great place to start is the Alzheimer's association, which has made a substantial impact in their community of Serra Mesa and to our region as a whole.

- Vondila Margo is an Executive Intern in the office of Supervisor Joel Anderson.

---



### My Next Coffee with Campillo!

Please join me for the next Coffee with Campillo, in which we'll enjoy some good conversation and even better coffee.  
[Click here to RSVP.](#)

September 14, 2024 from 9:30 to 11:00 AM  
Serra Mesa-Kearny Mesa Library  
9005 Aero Dr, San Diego, CA 92123

## IMPORTANT PHONE NUMBERS

Abandoned Vehicles & Police Non-Emergency	(619) 531-2000	Meals On Wheels	(619) 260-6110
Airport Noise - Montgomery Airfield	(858) 573-1436	Neighborhood Code Compliance	(619) 236-5500
Animal Control-Incorporated S.D.	(619) 299-7012	Barking Dogs, Code Violations, Noise, Safety	
Bus & Trolley Schedules	(619) 233-3004	Police Department - Eastern Division	(858) 495-7900
Canyon Cleanup	(619) 533-4411	Post Office	(800) 275-8777
Child Abuse Hotline	(858) 560-2191	Poison Control Center	(800) 876-4766
City Clerk - Docket Information	(619) 533-4000	Rape /Domestic Violence Hotline	(858) 272-1767
Crime - General Business	(619) 531-2000	RSVP (Retired Seniors Volunteer Patrol)	(858) 495-7990
Crime Stoppers	(619) 235-8477	SDG&E Emergencies	(800) 411-7343
Dead <b>Animal Removal</b> stay online	(858) 694-7000	Senior Citizen Services	(619) 236-6905
Emergency Information - Earthquake	(858) 565-3490	Serra Mesa Library	(858) 573-1396
Fallen Trees	(858) 527-7500	Serra Mesa Recreation Center	(858) 573-1408
Fire Department - Non-emergency	(619) 533-4300	Sidewalk Repair	(619) 527-7500
Flies & Vermin	(858) 694-2888	Stolen Property/Bicycles - To Report	(619) 531-2000
Graffiti	(619) 525-8522	Storm Drain Misuse	(619) 235-1000
Hazardous Chemicals & Waste	(858) 694-7000	Street Repair - Faded signs, pavement	(619) 527-7500
Health Violations	(619) 338-2222	Traffic Signal Maintenance	(619) 527-8650
Kearny High Alumni Association	(619) 699-0886	Water Emergencies - City & Private	(619) 515-3525
Litter - City Owned/Private Property	(858) 492-5055	Weeds	(619) 533-4444
		Zoning/Permits - Questions &Violations	(619) 446-5000



St. Columba Parish  
3327 Glencolum Drive  
San Diego, CA 92123  
(858) 277-3863

[www.stcolumbasandiego.com](http://www.stcolumbasandiego.com)

Sunday Mass 7:30, 9:30 a.m. & 5:30 p.m.  
Saturday 8:00 a.m. & 5:30 p.m.  
Mon-Thurs. 7:00 a.m.  
Fri. 8:15 a.m.  
Holy Days Please call the church for schedule

### ABLE PLUMBING AND DRAIN SERVICE

SCOTT FIORI  
PLUMBER92123@GMAIL.COM

8431 FIRESIDE AVE, SAN DIEGO CA 92123  
CALL OR TEXT 619 985 8204

CA LICENSE 681475



**OFFICE**  
2650 Melbourne Drive  
San Diego, CA 92123  
858.278.2633  
[missionvillage1@earthlink.net](mailto:missionvillage1@earthlink.net)  
[www.missionvillagechurch.com](http://www.missionvillagechurch.com)

**STEVE DE VOS, PASTOR**  
Cell 858.829.2097  
[stevdevos79@gmail.com](mailto:stevdevos79@gmail.com)

**SUNDAY WORSHIP SERVICE**  
**9:30 AM**  
Adult Sunday School 8:30 a.m.  
Children's Sunday School 10:00 a.m.  
Zoom Prayer Meeting—Tuesday 7:00 p.m.  
Youth Group—Wednesday 6:30 p.m.  
Small Group Study & Home Fellowship  
Groups at Various times through the week.

*We pray for peace and well-being of the Serra Mesa community*



**Pastor Karla Seyb-Stockton**

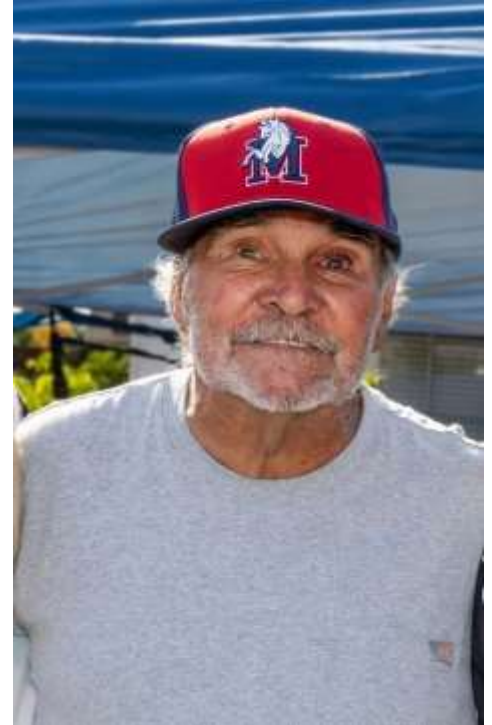
2696 Melbourne Drive  
San Diego, CA 92123  
858-277-6572  
[www.gethsemanesd.org](http://www.gethsemanesd.org)

Cell: 858-883-8038  
E-Mail: [karla.seyb.stockton@me.com](mailto:karla.seyb.stockton@me.com)  
Worship: 8:00, 9:30 a.m.

## Community Spotlight—John Marsh

*by Carmen Ojeda*

It's a warm July weekend in San Diego and Greyling Drive in Serra Mesa is buzzing with American Classic cars parked all along the neighborhood. It's the 4<sup>th</sup> annual Serra Mesa Block party! What is typically a quiet residential street has hundreds of neighbors, local business vendors, and some big well known San Diego businesses out here to participate in the biggest neighborhood party in Serra Mesa. As music fills the block with loud American classic rock ballads, kids run around excited to see all their friends as they ask their parents for Hawaiian shaved ice cream. Adults are also enjoying themselves with the beauty of American Classic muscle cars, a beer garden, and grilled hamburgers and hot dogs. Did I mention the 3 music bands, beers, and BBQ were free? They were all thanks to one visionary who has had his roots in Serra Mesa since 1970, John Marsh.



John Marsh moved into his home on Greyling Drive when he was 18 years old with his mother, stepfather, and 5 siblings. In his young adult years, John worked in construction and automotive repair a self-taught skill he developed by helping his stepfather work on his cars at age 12. It was Serra Mesa where he built his automotive business and raised his 3 boys- Joshua, Joseph, and Jacob with his wife of 44 years- Carol Marsh. To this day John is a well-known person that exudes life and love for his family and his love for his classic 1965 Mustang. There are many interesting aspects of John's life as he started working as a teenager and carved himself job opportunities in construction, automotive and even coaching a semi-professional baseball team in San Diego for over 2 decades – The Mavericks Baseball Club. He is someone that loves to network and his personal passions have directed him right to the middle of the Serra Mesa Block Party.

My initial question is how? How did this older gentleman get the Special Events permits, food, drinks, security personnel, 60 plus cars lined up for a car show, 3 music bands that created the party vibe necessary to get us all together forgetting about life's everyday problems or boring tasks in the middle of Summer? Simple- John was told by his father to never limit yourself to what you can achieve and achieving is exactly what he did. He ran the event like any orchestra maestro would- he reached out to donors to help pay for food, music, drinks, and permits necessary for a crowd of about 1,350 people (at least). He called his contacts for prizes as he raised funds to make sure the financial burden of a big event did not land on his shoulders, and he scored. He got a big-time realtor from the community to help with a big donation, David Hussain. David assisted with making sure the event got publicity and helped with the promotion needed. He contacted folks to put the news out there for some local neighborhood involvement and some of the Serra Mesa Community Council was in attendance as result.

So as the Serra Mesa Block party grew from the initial 350 plus attendees in 2020 – to about 1,500 attendees it is not surprising it has gotten more attention from local leaders. Congresswoman, Sarah Jacobs, popped in to say hello to her constituents on the busy Saturday afternoon. The Serra Mesa Block party can be defined as a successful community party – that became a reality from a casual conversation to get people together after the seclusion of the Covid era. John knows that we are better because we are an involved community, and we enjoy social gatherings. He likes to see people have fun and he loves that this is an event where family, neighbors, and friends can enjoy together regardless of politics or personal differences. We all love Serra Mesa, summer, good people and that he melded together. When I met John for lunch this afternoon to discuss writing a piece on him today he was excited to announce that the 5<sup>th</sup> Annual Serra Mesa Block Party will be the 2<sup>nd</sup> Saturday of July next year.. If you wish to volunteer or be part of the organizing committee, please let John know – he is already taking applications for volunteers as he is envisioning a bigger 2025.

## Serra Mesa Infrastructure Projects Survey Results

The Serra Mesa Planning Group used these survey results to submit to the City a priority list of infrastructure projects for the Capital Improvement Program (CIP). The documents with the survey results are posted at <https://www.serramesa.org/smpg/smpg-documents/>, scroll down to Supporting Materials. One question was open ended (respondents could add other projects) and the other three questions asked respondents to choose three items only for the “Most Important” category.

### Summary of Results

Description of Other Projects That Should Be Added - 140 comments

Highlights (topic received most responses) from the categorized list of comments posted on the website:

- Bike lane removal
- Return street to 4 lanes (e.g., Mission Village and Gramercy)
- Fix streets
- Many streets in need of 4-way stop signs were identified
- Traffic calming on Hammond
- Dog park
- Upgrade Murray Ridge Park playground equipment
- Concerns about ADUs
- Add Grocery Store
- Concerns with old library site
- Finish undergrounding utilities

Park & Other Infrastructure Projects – 306 answered 13 skipped

Project	Most Important	Important	Least Important	No Preference/ Don't Know
Comfort Station at Murray Ridge Park	62 (23%)	<b>82</b> (31%)	68 (26%)	53 (20%)
Comfort Stations at Juarez & New Parks	42 (16%)	65 (25%)	<b>82</b> (32%)	67 (26%)
Juarez Elementary School-Joint Use Area Improvements	49 (19%)	<b>81</b> (31%)	60 (23%)	68 (26%)
Paths to library & residential (southwest & southeast)	38 (15%)	<b>93</b> (36%)	90 (34%)	40 (15%)
Serra Mesa Community Park Recreation Building Modernization	<b>124</b> (45%)	98 (35%)	33 (12%)	23 (8%)
Swimming Pool at Serra Mesa Recreation Center	<b>118</b> (41%)	89 (31%)	49 (17%)	30 (10%)
Fire Station #28	81 (31%)	<b>94</b> (36%)	31 (12%)	58 (22%)
Replace “Serra Mesa” sign at Mission Center Rd heading into Serra Mesa	24 (9%)	63 (23%)	<b>161</b> (59%)	23 (8%)
Serra Mesa Community Plan Update	75 (28%)	<b>118</b> (43%)	37 (14%)	42 (15%)



Transportation Infrastructure Projects – 305 answered, 14 skipped

Project	Most Important	Important	Least Important	No Preference/ Don't know
Fix drainage issue at Sandrock and Aero Dr. (currently in Kearny Mesa Community Plan Area but effects the SM community)	<b>137</b> (48%)	108 (38%)	20 (7%)	21 (7%)
Median Strip Improvements on main Serra Mesa streets	72(26%)	<b>101</b> (37%)	75 (27%)	26 (9%)
Signal at Library Site on Aero Dr	20 (8%)	59 (22%)	<b>150</b> (57%)	34 (13%)
Taft crosswalk signal (HAWK beacon) between Gramercy and Ruffin Rd to provide safety for kids	<b>123</b> (45%)	87 (32%)	39 (14%)	24 (9%)
Traffic Improvements at Corners of Ronda/Mission Village Dr	<b>106</b> (38%)	73 (26%)	57 (21%)	42 (15%)
Traffic Signal Improvement at Gramercy Rd/Greyling Drat Sandrock	55 (21%)	81 (31%)	<b>90</b> (34%)	36 (14%)
Traffic Signal Installation: Afton Road & Hurlbut St	16 (6%)	42 (17%)	<b>111</b> (44%)	85 (33%)
Traffic Signal Interconnect (various street in community)	36 (14%)	74 (29%)	69 (27%)	<b>78</b> (30%)

Birdland Infrastructure Projects – 214 answered, 105 skipped

Project	Most Important	Important	Least Important	No Preference/ Don't Know
Architectural Barrier Removal (pedestrian ramps)	5 (3%)	26 (14%)	38 (21%)	<b>112</b> (62%)
Birdland Neighborhood Park - Acquire land and develop	29 (15%)	26 (13%)	40 (21%)	<b>98</b> (51%)
Fletcher Elementary School--Joint-Use Area Improvements	32 (17%)	34 (18%)	27 (14%)	<b>98</b> (51%)
Genesee Avenue Widening Between the SR163	28 (15%)	37 (20%)	36 (19%)	<b>88</b> (47%)
Genesee Avenue Widening on South Side	23 (12%)	35 (19%)	38 (20%)	<b>93</b> (49%)
Health Center Drive Widening	28 (15%)	40 (21%)	40 (21%)	<b>84</b> (44%)
Starling Drive and Meadowlark Drive Intersection to add a light after Juvenile buildings construction finishes	8 (4%)	37 (20%)	32 (17%)	<b>109</b> (59%)
Starling Drive Widening	6 (3%)	19 (10%)	41 (22%)	<b>119</b> (64%)
Widen Cardinal Road/Improvements	7 (4%)	20 (11%)	48 (25%)	<b>114</b> (60%)
Widen Frost Street to provide 4 lanes	18 (10%)	25 (14%)	40 (22%)	<b>99</b> (54%)

**SPECIAL EVENT**

San Diego's Finest "**GEM DIEGO SHOW**"

Liberty Station Conference Center

2600 Laning Rd San Diego, 92106

(1 mile south of Liberty Station Market Place)

**Nov. 2 & 3, 2024 10-6 Sat 10-4 Sun**

Free Admission & Ample Free Parking

**For All Ages; Trained Service Animals Only!**

Holiday Shopping • Door Prizes • Free Gem-Mineral ID

And so much more!



@ListedbyDavid  
Buy. Sell. Invest. Retire.



**David Hussain**

BROKER ASSOCIATE

DRE: 02008317 | NMLS: 3024777



Cell: 951.491.5302

Desk: 858.215.3512

[David@ListedbyDavid.com](mailto:David@ListedbyDavid.com)



## Projects & Other Information

*(Current Late August 2024)*

### Serra Mesa Projects

**Franklin Ridge Road Connection** – Schedule for implementation of mitigations and road connection pending. The developer submitted a design plan for 5 travel lanes and 2 bike lanes for the Murray Ridge bridge (the configuration that's described in the approved October 2017 plan). This differs from Caltrans' draft plan which describes the redesign of the Murray Ridge bridge as 4 travel lanes (11' wide) and 2 Class IV Bikeways (9' separated for each bikeway). Also, other city-approved mitigations include 5 travel lanes and 2 bike lanes for Phyllis Pl from the Franklin Ridge connection to the bridge, and 4 travel lanes and 2 bike lanes for the connection.

**AT&T Wireless Communication Facility, 2696 Melbourne Dr** – 40' high tall faux eucalyptus tree; 12 antennas, 9 remote radio units; 300-foot ground level equipment enclosure, faux rock; located near labyrinth.

**Mission Village Drive Properties** owned by CityMark Development (purchased from Gleich Trust); zoned as a commercial zone that allows residential; qualifies for affordable density bonus; amenities minimal; rental rates not determined; Process 1 (staff approves project).

**2696 Mission Village Drive** (former gas station near corner of Shawn Avenue): Build 3 story, 18-unit apartment building with 1-2 bedrooms; rental units; 2 affordable housing units built off-site; 24 parking spaces. Construction started. Plans at <https://citymarkdevelopment.box.com/s/z2hbebr8ble7xpfduomvijdicgdi5gz0>.

**3222 Mission Village Drive** (former Tom Russell Chevron Station): Build 3 story, 21-unit apartment building with 1-2 bedrooms on .96 acre; rental units; 2 affordable housing units built off-site; 21 parking spaces. Exit on Mission Village Drive. Construction started. Plans at <https://citymarkdevelopment.box.com/s/z1vvp1nhe4xf2j3h823h5mjasw5yj5e>.

**3241 Mission Village Drive** (former medical building complex): Two sections – 4 story building, 35-unit apartment building facing Mission Village Dr and 3 story, 25-unit townhouses with 3 bedrooms and 2 car garages; exit on Ruffin Rd; 92 parking spaces; still determining if townhouses will be rental units. Construction is anticipated to begin late summer 2024. Plans at <https://citymarkdevelopment.box.com/s/1p564mqdb76pbwtusug2o2p15kmpe4fr>.

**Former Guild Mortgage Building, 9160 Gramercy Dr** – Vacant. For sale.

**Former Mission Village Shopping Center, across from Taft Middle School, 9280 Gramercy Dr.** Approval in 2004 for 160 rental units and 15,000 s.f. retail (8,000 s.f. along Ruffin Rd and 7,000 s.f. at Ruffin/Gramercy corner). In 2005 approval for condominiums, required to make the community room available to community at no cost, and condominium owners have an assigned parking space deeded to them. In 2007 never expiring Site Development Permit, Approval #57551, created for 9178 Gramercy Drive. Grading permit issued in 2006. San Diego Regional Water Quality Control Board issued a notification of no further action on 1/20/2022. July 2022 - Clean-up equipment removed from site. Site for sale.

Work details for the site of a One Hour Dry Cleaners located in the former shopping center are posted on the gate at 9280 Gramercy Dr. Information:

Continued to page 12

Continued from page 11

*The applicable permit is PRJ-1108858 which was issued on 05/14/2024. The permit allows for excavation and offsite disposal of approximately 1,200 cubic yards of chlorinated solvent impacted soils from the site subsurface.*

**Old Serra Mesa Library at 3440 Sandrock Rd** – Community HousingWorks (CHW) negotiating lease to build 60 units (56 one bedroom and 4 two-bedrooms) on the .34 acre site, 22 parking spaces, 5 stories high, 100% units will have rents affordable for low- to middle-income families, 30 units reserved for veterans. Amenities include laundry room, multipurpose room with kitchen, computer lab, community garden, tot-lot, and management leasing office. The item is expected to be heard by City Council in October.

### **Kearny Mesa Projects/Issues**

**Aero Project, 8225 Aero Drive** – Former Kelco building, Sares Regis Group Residential is building 434 apartments (1, 2, & 3 bedroom units), 7 stories high, to be completed in 2024. Amenities include pool, spa, dog run, game courtyard, golf putting green, outdoor culinary kitchen, co-work space, conference room, clubhouse, fitness center, and bike repair room. More information can be found at the City's website, <https://opensd.sandiego.gov/web/approvals/>, Project 692190 - DIGITAL-The Aero G & PI.

**Drainage Issue at Corner of Aero/ Sandrock** – From City staff via City Councilmember Raul Campillo's office: "The VA point of contact is currently working with the Water Board to obtain a dewatering permit. Additionally, they have contracted with an engineer to identify solutions to address the water flow coming from their property. Our Inspector also requested that they maintain their gutter daily to ensure that the temporary diversion that was installed to direct water flow away from the intersection continues to function."

**Airport Plaza Building, 8555 Aero Dr** – Construction of 7-story above grade and 1-story below grade for 302 multifamily dwelling units and associated accessory uses. Project will include affordable units and requests an affordable housing bonus. (PMT-3158932).

### **City-Wide**

**ADU/JADU (Accessory Dwelling Units)** – ADUs provide living area either detached or attached. Regulations – Encroachment into side and rear yards, no parking required; maximum size 1,200 s.f., rental term minimum 31 days, major fees waived, owner doesn't have to live in premises. Number of ADUs permitted on single family property based on TPA (area within ½ mile of existing or planned major transit stop). Could affect 748 acres in Serra Mesa.



## AZTECS ROCK HUNGER

As summer winds down, students prepare for fall classes. Perhaps the picture that comes to mind would be of a student on the way to campus in a car their parents purchased. This ideal setting doesn't hold quite true for all students. For many, the excitement of starting a new academic year is overshadowed by the stress of financial burdens.

Some begin this new adventure in life with financial difficulties. Unfortunately, some students will have to choose between classroom supplies, like textbooks, or a good meal each day. That's where Aztecs Rock Hunger comes into play with the goal of allowing students to do both. By bridging the gap between necessity and education, this campaign ensures that students can focus on their studies without worrying about their next meal.

Aztecs Rock Hunger, an annual campaign led by Associated Students (A.S.) at San Diego State University (SDSU), is an annual campaign to fight food and nutrition insecurity at SDSU and beyond. Since its inception, ARH has raised over \$920,000 for the following beneficiaries:

- 👉 SDSU Economic Crisis Response Team: An SDSU program for students facing food, housing, or other immediate financial crises. Last year, ECRT served almost 2,000 students.
- 👉 A.S. Food Pantry: A free service for SDSU students distributing over 100,000 lbs. of food annually, including eggs and fresh produce.
- 👉 The Jacobs & Cushman San Diego Food Bank: The largest relief organization in San Diego County serving an average of 400,000 people monthly.

Most of us have had to reach out for economic assistance in our lives, or know family and friends in need. It's a reminder that economic hardship can affect anyone, and community support is crucial in helping each other through tough times. Statistics show that 1 in 4 adults face food insecurity in San Diego, and Aztecs Rock Hunger is committed to making a difference. In this issue of the Serra Mesa Observer, you will find a flyer providing detail on this worthwhile effort.

This year, Aztecs Rock Hunger is hoping to hit \$1 million in lifetime contributions. Reaching this milestone would not only be a remarkable achievement but also a testament to the power of community effort. Donate if you can, tell a friend and please help spread the word about the Aztecs Rock Hunger campaign taking place October 4-27, 2024! For more information, go to [as.sdsu.edu/rockhunger](https://as.sdsu.edu/rockhunger).



If you wondered what was going on at the stadium the other night when fireworks blazed the sky, in the future, you won't have to guess. Sign up for the new "Snapdragon Neighbor Newsletter" on the stadium's website.

[snapdragonstadium.com](http://snapdragonstadium.com)

You'll receive monthly event updates, flyover alerts, and more. Get ahead of the crowd or join it! SDSU Football season starts Saturday, August 31st. Go Aztecs!



Bike Lane Clean-Up, Response from City staff via City Councilmember Raul Campillo's office when asked about cleaning up leaves along the bike lane on Aero Drive: For bike lanes with protected barriers (Class IV bikeways), we use a more compact sweeper (SWEEP-E). In contrast, bike lanes without barriers can be serviced with our full-size sweeper. The accumulation of leaves along the curb line is due to the route being paused during construction. Our staff is working on incorporating this new bike route into our regular sweeping schedule. In the meantime, we will arrange for a special sweep before the end of August.

## SERRA MESA BLOCK PARTY

On July 13th, Serra Mesa residents were treated to a delightful event. Three bands entertained with live music. The Siers Brothers, who put on an enjoyable performance at the 92123 festival, played for their neighbors again. Love is a Rose, a Linda Ronstadt Tribute Band, serenaded swooning couples who danced in each other's arms. Pinch Flats rocked the crowd. Drinks and food were plentiful, and free to all attendees!

John Marsh, a Serra Mesa resident who organized the party, contributed his own funds to make this all happen. That included the food, music, and the permits to close the city streets for the block party. He went all out on the BBQ splurging with Hodad's hamburgers! There were also vendors, food booths, and a very classic car show.

The Serra Mesa Community Council Board Members manned a booth, greeting neighbors, and thrilling kids with exciting door prizes. Congresswoman Sara Jacobs accepted our invitation to attend, and spent the afternoon enjoying herself, and visiting with new friends.

The party ended as the streets filled with neighbors dancing with their hands raised to the tune "It Makes Me Wanna Shout". We all shouted out our sincere thanks to John for a great time at Serra Mesa's 4th Annual Block Party. Let's do it again!



Thanks so much to Debbie, Judi, Andrea and Carmen for coming out to the event this weekend. Thanks to Carl, Cindy and Cindy for the table, tent, signs, etc. It was a great party. Check out the link below to see the pictures. "Photo by Scott Norland Photography" . <https://www.scottnorlandphotography.com/>



Pictures below are from Carmen



## ***Name These Serra Mesa Buildings***

**Building #1**



**Building #2**



**Building #3**





## Buildings #4



## Brain Teaser

This brain teaser contains a clue which is a two-word phrase (no spaces), 3 single, and 1 double word. The two-word phrase describes a commonality for all the photos. The words can be joined vertically, horizontally, diagonally, forwards, or backwards.

P	U	P	I	B	R	R
O	B	L	L	C	A	Y
S	O	F	I	R	S	R
T	F	I	V	E	E	E
H	O	I	C	E	C	C
S	I	A	C	E	N	E
P	T	L	S	S	T	R

Answers to the Name This Serra Mesa Location and the Brain Teaser are at <https://www.serramesa.org/smcc/observer-newsletter/>.



**Holy Angels Byzantine Catholic Church**  
 2235 Galahad Road  
 San Diego, CA 92123  
 Phone: (858) 277-2511



Fr. James Bankston  
 Administrator  
 pastorhasd@gmail.com  
 www.holyangelsandiego.com  
 Facebook: Holy Angels Byzantine Catholic Church

**All are Welcome!**

### Holy Angels Ethnic Foods

**858-268-3458**

2235 Galahad Rd • San Diego, CA 92123-3931

Open 10:00 AM to 2:00 PM Friday - Tuesday  
 (Closed Wed & Thurs)

*Please always call before coming*

**Ethnic Foods Available**

Kolbasi - Holubki - Kolachi - Pirohi - Rozky  
 Other seasonal items

## Serra Mesa Recreation Center

9020 Village Glen Dr.

(858) 573-1408

1:00 - 8:00 p.m. Monday, Tuesday, Thursday

1:00 - 9:00 p.m. Wednesday

2:00-6:00 p.m. Friday

10:00 a.m. - 4:00 p.m. Saturday

Closed Sunday.

### Community Sports Information:

A.Y.S.O. Soccer: (858) 268-5880

<http://www.ayso780.org>

N.Y.S. Soccer : (858) 973-6101

SD United Soccer: (858) 457-4625

Serra Mesa Senior Softball:

(858) 279-4283

Serra Mesa Little League: (858) 279-8361

Serra Mesa Recreation Council meets on  
 September 10 & October 8 at 6:30 p.m.



Serra Mesa Food Pantry has  
 a drive-thru distribution every  
 Wednesday from 10am-1pm  
 at 2650 Melbourne Drive.

## Serra Mesa Planning Group News

**Meetings:** The Serra Mesa Planning Group (SMPG) is officially recognized by the City and makes recommendations on land use issues to the City. SMPG meets the third Thursday of the month, 7 pm, at the Serra Mesa-Kearny Mesa Library, 9005 Aero Drive, and via online meetings. To receive notices about meetings, which would include a link for the online meeting, sign up at <http://www.serramesa.org/>. Next meetings: September 19 and October 17. To contact us, email [smg@serramesa.org](mailto:smg@serramesa.org).

**Board Members:** Board members elected at the August 15<sup>th</sup> meeting are Wayne Harris, Philip Macintosh, and Jason Scheiner. Other board members are Deborah Burns, Kira Finkenberg, Joe Ippolito, Sharon Kramer, Carrie Longley, Cindy Moore, Chris Rosemond (Vice-Chair), and Catharine Stempel (Chair).

### Information from August 15 Meeting

**Infrastructure Projects** – The City requested that SMPG submit a list of priority infrastructure projects for the Capital Improvement Program (CIP) by August 15. The Serra Mesa Community Council distributed a survey for community input. Survey results are included in this edition and at <https://www.serramesa.org/smpg/smpg-documents/>, under Supporting Materials at bottom of page. **Motion passed to submit the following list of infrastructure projects:** fix drainage issues at Aero/Sandrock, Taft crosswalk signal (HAWK beacon), traffic control to prevent accidents at Mission Village Dr and Ronda Ave, Serra Mesa Recreation Building modernization, Serra Mesa Community Pool, Fletcher Joint Use Park improvements, and pave Cardinal.

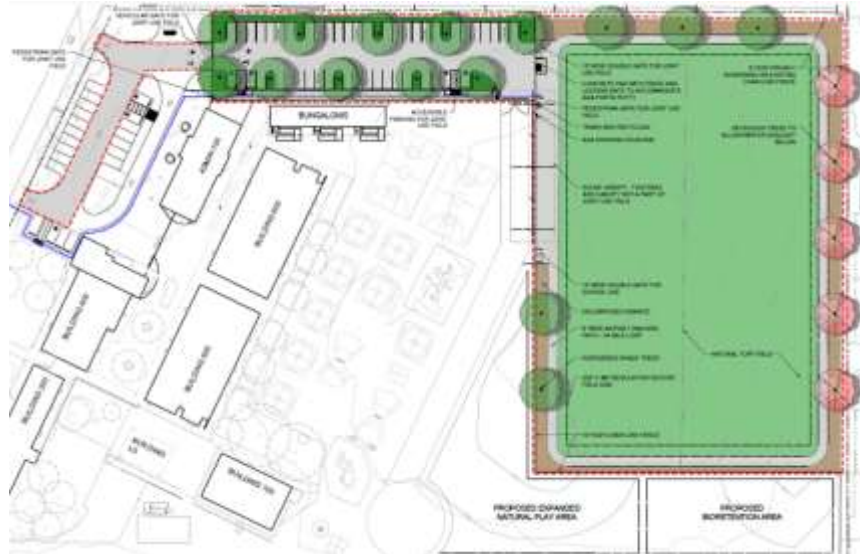
**New Joint Use Facility at Jones Elementary School, 2751 Greyling Drive** – Presentation was made by representatives of Parks & Recreation, San Diego Unified School District, and architects in June 2024 and updated plans were presented at the August 2024 meeting. **Motion passed to recommend approval of the project.** The next step is to present the project to the Parks and Recreation Board in Fall 2024.

#### Project Summary:

- Project will include a natural grass multi-purpose field with walking track, drinking fountain, parking lot and fencing. Updated plans included additional shade trees in parking lot. Fencing includes 5' high privacy screening on existing chain link fence. A concern was raised about the "roughness" of the asphalt walking path and feasibility of using a different surface or a smoother surface.
- Funding comes from Propositions S & Z, Measures YY & U, and Capital Improvement Bond Programs.\*
- Estimated schedule – General Develop Plan complete in Fall 2024, Construction Documents complete in Summer 2025, and open for use in 2028. Jones Elementary School will be undergoing whole site modernization.
- Joint Use Projects – City of San Diego provides maintenance. Parks are open when school is not in session. Refer to [https://www.sandiegounified.org/departments/real\\_estate\\_and\\_rentals/joint\\_use](https://www.sandiegounified.org/departments/real_estate_and_rentals/joint_use) for Frequently Asked Questions and Concerns.
- Proposed Plan – Modernization plan removes the portable buildings on northside of the school and adds a parking lot for use as a staff parking lot during school time. The current parking lot can be reconfigured for drop off and pick up.

\*Angier, Taft, and Wegeforth Joint Use Projects received additional amenities because fees from development projects were available.

## Proposed Site Plan for Jones Joint Use Facility



**3440 Sandrock Road** (former Serra Mesa Library) – Presentations were made on two different proposals for the site: 1) Apartment Project and 2) Youth Center

**Youth Center:** Horizon Christian Fellowship wants to lease the property, renovate the building, and establish a Youth Center. Currently, they're working with Taft Middle School students. **Motion passed to support the Horizon Christian Fellowship's proposal to rehabilitate the existing building for a youth center using exclusively private funding.**

**Apartment Project:** Community HousingWorks (CHW), based in Mission Valley, presented their proposal to lease and build on the .34 acre site. More information about CHW at [chworks.org](http://chworks.org). Pertinent information:

- 5-story elevator building with 60 units (56, one-bedrooms; 4, two-bedrooms); 22 parking spaces
- 100% units will have rents affordable for low- to middle-income families; 30 units reserved for veterans
- Amenities: multipurpose room with kitchen, computer lab, management leasing office, centralized laundry room, community garden, tot-lot, security cameras



Concerns included lack of parking spaces, building height (surrounding buildings are two stories), and setback.

**The motion to support the affordable housing project with the requirement that setbacks in the building height are incorporated, size and scale are reduced, and more parking is required didn't pass.**

CHW is expecting the project to be heard at City Council in October.

Continued to page 16



LEVEL 1: BUILDING PLAN



## **Serra Mesa-Kearny Mesa Branch Library**

(858) 573-1396 [facebook.com/SerraMesaLibrary/](https://www.facebook.com/SerraMesaLibrary/)

Email Questions to [SMstaff@sandiego.gov](mailto:SMstaff@sandiego.gov)

### **Library Hours**

Monday and Tuesday: 11:30 am - 8:00 pm

Wednesday through Saturday: 9:30 am - 6:00 pm

Sunday: 1:00 pm – 5:00 pm

### **Holiday Closures**

All San Diego Public Library Locations will be closed Monday, September 2 observance of Labor Day.

### **Online library services available 24/7**

- **eBooks, eAudiobooks and Digital Magazines:** take a look at our eLibrary resource, we've got some new resources for the kids and adults <https://sandiego.gov/eLibrary>
- **Movies:** Free access to movies with your library card <https://sandiegopl.kanopy.com/>
- **Online Book Clubs:** <https://sandiego.gov/bookclubs>
- **Program Videos:** <https://sandiego.gov/public-library/program-videos>

### **Do Your Homework @ the Library Homework Help - Mondays - Thursdays 3:00pm - 6:00pm (except September 2)**

Students in Kindergarten through 8th grade can come in for free homework assistance! Bring in your homework to get assistance from one of our Homework Coaches!

### **Pajama Storytime with Ms. Carrie – Mondays at 6:30pm (except September 2)**

Put on your favorite PJs and join Ms. Carrie in the Community Room Monday evenings at 6:30pm for a pajama storytime. Pajamas are encouraged, but not required. No sign up required.

### **Virtual Tuesday Morning Storytime with Ms. Carrie – Tuesdays at 10:00am**

Join Ms. Carrie, on Zoom, Tuesday mornings at 10:00am for virtual stories, songs, and fun that foster early literacy skills. Register at the SDPL Virtual Branch at [www.SanDiego.LibraryMarket.com](http://www.SanDiego.LibraryMarket.com) When you register for one storytime, you will receive an email with the Meeting Room and Passcode good for storytimes for future Virtual Tuesday Morning Storytimes, so you do not need to register for each session.

### **Chair Yoga – Tuesdays at 11:45am**

Work on your flexibility, strength building, and quiet your mind with functional movement practice Thursdays at 11:45am. Participate at your own ability. Suitable for adults of all ages. Wear flexible clothing and bring any preferred yoga equipment. Chairs provided.

### **Lego Club – 2nd and 4th Tuesdays at 4:30pm**

Come build with us and become a Master Builder! Join us each month to enjoy an hour of free building and then see your Lego creations displayed in the library.

### **Tech Help – Wednesdays at 3:00pm and alternating Saturdays at 10:00am**

Bring your tablet, phone, or laptop for general questions and hands on learning with your device.

### **Morning Book Club - 2nd Thursday at 10:00am**

Love to read and talk about books? Join the Morning Book Club! September 12 will discuss *Good Night, Irene* by Luis Alberto Urrea, and October 10 will discuss *Enrique's Journey* by Sonia Nazario.

### **Baby Toddler Time – Thursdays at 10:00am**

This loosely structured, baby-led time for play, bubbles, stories, and more. Designed for little ones 0-2 yrs.

### **Knitting and Crochet Circle – Saturdays at 10:00am**

Join the knitting and crochet circle. Improve your skills in these traditional art forms. Bring your project for social crafting!

### **Piano Concerts with Dave Chamberlin – 4th Sunday of the month at 3:00pm**

Serra Mesa-Kearny Mesa Library is excited to host a piano concert series in collaboration with pianist, David Chamberlin.

### **September 4, 6:00pm Friends of the Serra Mesa-Kearny Mesa Library Meeting.**

Community members are welcome to join, become a member, and discuss ways to support the library. This meeting will be held virtually on Zoom. Please email [serramesalibraryfriends@gmail.com](mailto:serramesalibraryfriends@gmail.com) for the log in information.

### **September 21, 2:00pm End of Summer Bubble Party.**

Join us in celebrating the end of Summer with a Bubble Party! Our Community Room Patio will be filled with bubbles and music for people of all ages to enjoy!



**October 6, 2:00pm Storytime and Craft: *Our Nipa Hut: A Story in The Philippines.***

Celebrate Filipino American History Month as author Rachell Abalos reads her story *Our Nipa Hut: A Story in The Philippines* and leads attendees in an easy Nipa Hut craft.

**October 29, 4:00pm Halloween at the Library.**

Park Ranger Tiffany will join us for a spooky nature show-and-tell and craft time. Learn about some local creatures that make us shiver like bats, snakes, and spiders.

**Friends of the Library Donations**

The Friends of the Serra Mesa-Kearny Mesa Library are currently accepting book donations during the library's open hours.

**Friends of the Library Volunteers Needed**

Looking to get more involved with your community? Love books and your library? Reach out to Friends of Serra Mesa Library to hear more about how you can help! Email us at [serramesalibraryfriends@gmail.com](mailto:serramesalibraryfriends@gmail.com) or DM on Instagram @serramesalibraryfriends

**Mobile Hotspots & Chromebooks**

Mobile Hotspots and Chromebooks are now available for check out at the Serra Mesa-Kearny Mesa Library. The mobile hotspots are easy to use and allow users to connect their laptop, tablet and other Wi-Fi enabled devices to the internet. Find out more information at <https://www.sandiego.gov/public-library/san-diego-access-4-all>



***Serra Mesa Observer***

Editor: *Ronda Adams*

Post Office Box 23315

San Diego, CA 92193

# Dated Material

## **Serra Mesa Food Pantry**

**Has a Drive-Thru distribution every Wednesdays 10:00-1:00 p.m.**

**Located at Mission Village Christian Fellowship**

**2650 Melbourne Drive 92123**

**858-278-2647**

